

EC BEARING INSPECTION SYSTEM

TecScan offers an **Automated Eddy Current** Bearing Inspection System. Our standard configuration consists of a 4-axis system (X, Z, Gimbal, Turntable) for the inspection of **Aircraft bearings** up to 36" in diameter, other configurations can also be custom designed as per clients' requirements.

Our solution is being used to inspect **Rolls Royce, P&W, GE, TurboMeca components**. It have obtained several approvals and meet numerous NDT repair procedures requirements.

www.tecscan.ca



Scanner specifications

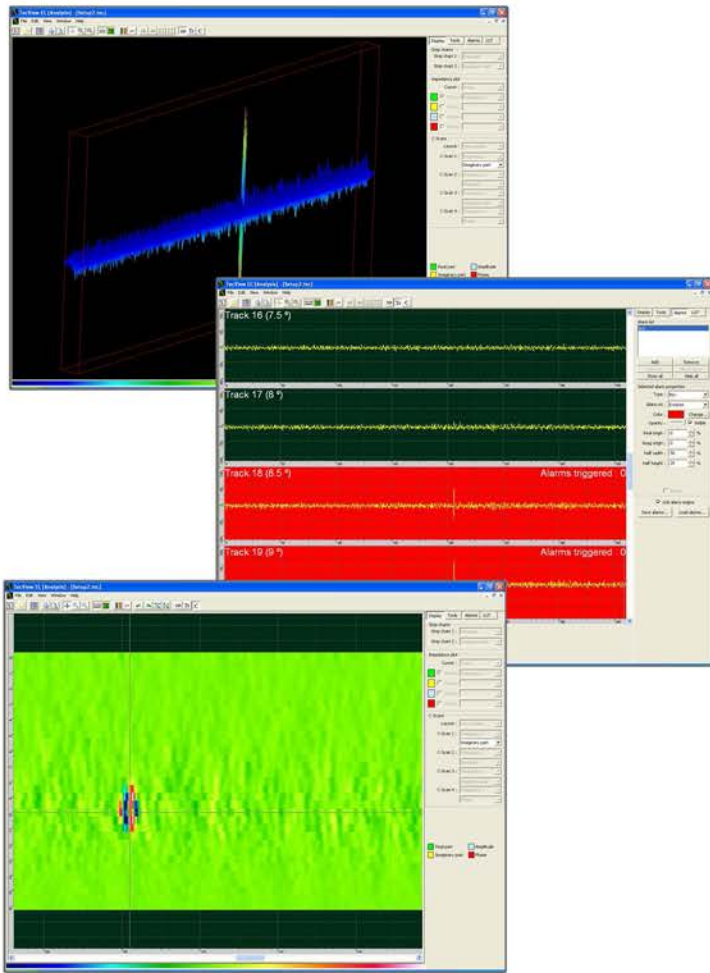
Axis	Max Speed	Accuracy (Per Feet)	Resolution (Per Step)	Repeatability
X	10"/Sec	±0.005"	0.0005"	0.003"
Z	6"/Sec	±0.005"	0.0005"	0.003"
Gimbal	30°/Sec	±0.005°	0.0005°	0.001°
Turn Table	60°/Sec	±0.10°	0.015°	0.05°

TecScan has developed automate scanning procedures specially tailored for the inspection of inner and outer **Raceways, Roller Bearings, Inner Grooves**, and other bearing related defects.

TecScan's bearing inspection system is fully adapted to the repetitive inspection of identical parts. Once the setup is performed for a test piece, identical parts can be inspected easily and with minimal interventions from the inspector.



TecView™ EC is a true Windows® based software designed for Eddy Current inspections. Combining the best of Windows® operating system and graphical user interface, its features are developed for the inspection workplace. With its intuitive and user-friendly interface, TecView EC assists with the task of performing Eddy Current inspections from start to finish. It includes data acquisition and management, robotic control, imaging, analysis, alarms and interpretation modules.

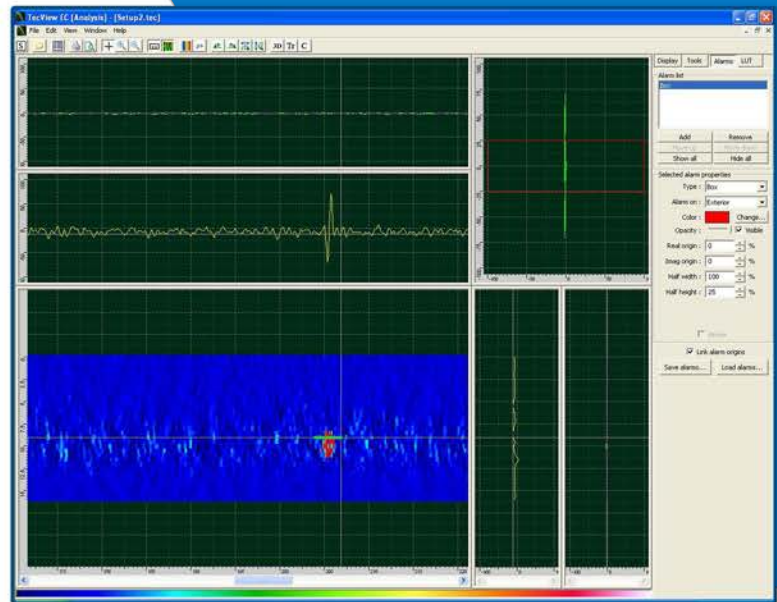


TecView™ EC has all the required features to make TecScan's Bearing Inspection System a truly time saving and easy to use solution for your bearing inspection needs. With features that permit the user to set multiple alarms, display the inspection in track mode, and generate print reports, TecView™ EC is truly tailored to bearing inspections. In addition most commercial eddy current units can be integrated to the system thus enabling it to meet clients' requirements.

An Integrated Solution

TecScan delivers a turnkey solution that includes our bearing inspection scanner, all required electronics housed in an industrial enclosure, a workstation, and an external eddy current instrument that is completely integrated to our TecView™ EC software package.

The scanning process is completely automated and controlled by our TecView™ EC software package which incorporates motion control, setting of eddy current parameters, data acquisition, and data analysis.



System Features

- Turnkey System
- Scanner adapted for inspection of bearing geometry
- Scanner adapted for the repetitive scans of identical parts
- TecView™ EC software package specifically designed for bearing inspections.